

F.A. RTE.	SECTION	COUNTY	TOTAL SHEETS	SHEET NO.
	22-00210-05-TL	DUPAGE	18	1
		ILLINOIS	CONTRACT NO.	

DUPAGE COUNTY PROPOSED LIGHTING PLANS

COUNTY HIGHWAY 21
SECTION 22-00210-05-TL

COUNTY HIGHWAY 21 FABYAN PARKWAY SECTION 22-00210-05-TL FABYAN PARKWAY ROADWAY LIGHTING IMPROVEMENTS

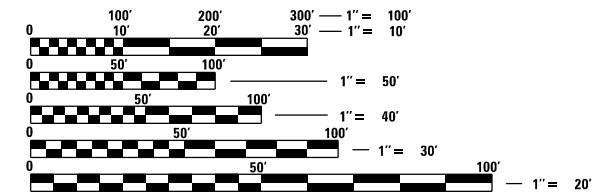
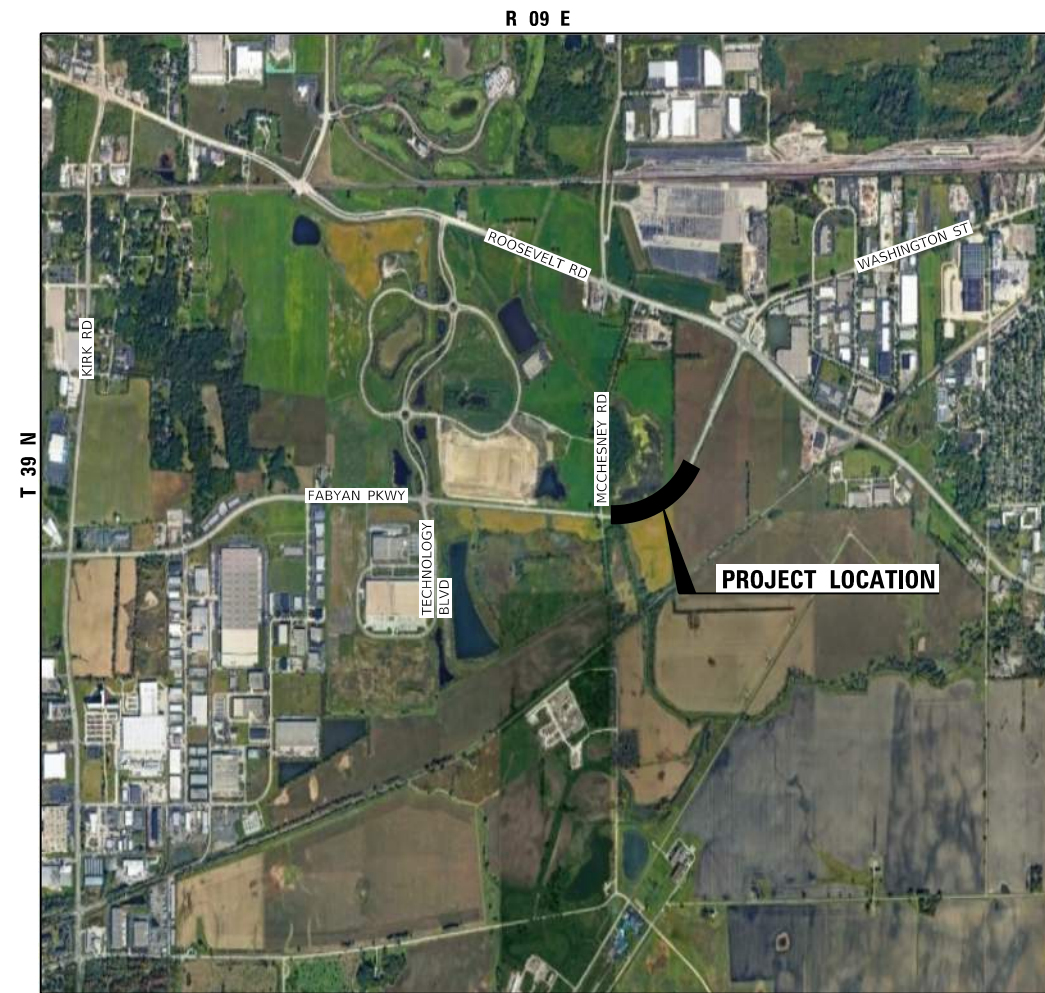
INDEX OF SHEETS

- 1 COVER SHEET
- 2 HIGHWAY STANDARDS, GENERAL NOTES, AND SOQ
- 3 SCHEDULE OF QUANTITIES
- 4-8 PROPOSED LIGHTING PLANS
- 9 LIGHTING CIRCUIT DIAGRAM
- 10-18 DISTRICT 1 & HIGHWAY STANDARDS

WAYNE	BLOOMINGDALE	ADDISON
WINFIELD	MILTON	YORK
NAPERVILLE	LISLE	DOWNERS GROVE N.
		DOWNERS GROVE S.

— = PROJECT LOCATION
DU PAGE COUNTY

PROJECT LOCATED IN THE CITY OF
WEST CHICAGO



FULL SIZE PLANS HAVE BEEN PREPARED USING STANDARD ENGINEERING SCALES. REDUCED SIZED PLANS WILL NOT CONFORM TO STANDARD SCALES. IN MAKING MEASUREMENTS ON REDUCED PLANS, THE ABOVE SCALES MAY BE USED.

J.U.L.I.E.
JOINT UTILITY LOCATING INFORMATION FOR EXCAVATORS
1-800-892-0123
OR 811

LOCATION MAP
NOT TO SCALE

DATE _____
JAY EMAN
ILLINOIS REGISTERED PROFESSIONAL ENGINEER NO. 062-046824
MY LICENSE EXPIRES ON 11-30-2023
PLAN PREPARATION DATE: 04-18-2022

PLANS PREPARED BY:



FOR

DUPAGE COUNTY
DIVISION OF TRANSPORTATION
CHRISTOPHER C. SNYDER, P.E.
COUNTY ENGINEER

GENERAL NOTES

- PROVIDE ALL LABOR, MATERIALS, AND EQUIPMENT TO FURNISH AND INSTALL THE ELECTRICAL WORK AS SHOWN ON THE PLANS, AS DETAILED IN THE SPECIFICATIONS, AS REQUIRED BY THE NATIONAL ELECTRICAL CODE AND AS REQUIRED FOR SPECIFIED OPERATION. CONTRACTOR SHALL EMPLOY ONLY EXPERIENCED ELECTRICIANS. A DULY LICENSED ELECTRICIAN SHALL SUPERVISE ALL WORK. CONTRACTOR SHALL ENSURE THAT ALL EMPLOYEES ARE FAMILIAR WITH THE TYPE OF WORK ENCOUNTERED ON THE PROJECT. ALL MATERIALS AND EQUIPMENT PROVIDED, WHERE APPLICABLE, SHALL HAVE A UL OR FM "LISTING MARK" AFFIXED TO THEM OR THEIR PACKING CONTAINERS AND THEY SHALL MEET ALL UL OR FM AND NEC (NATIONAL ELECTRICAL CODE) STANDARDS FOR THEIR INDICATED USE.
- WHEREVER THE TERM "STANDARD SPECIFICATIONS" IS USED, IT SHALL MEAN "STANDARD SPECIFICATIONS FOR ROAD AND BRIDGE CONSTRUCTION, 2022 EDITION BY THE ILLINOIS DEPARTMENT OF TRANSPORTATION." ELECTRICAL EQUIPMENT MATERIALS AND INSTALLATION SHALL BE ACCORDING TO STANDARD SPECIFICATION DIVISION 800 "ELECTRICAL." THE SPECIAL PROVISIONS AND THE PLANS. GENERAL ELECTRICAL REQUIREMENTS SHALL BE ACCORDING TO THE APPLICABLE ARTICLES IN SECTION 801 "ELECTRICAL REQUIREMENTS."
- FIELD LOCATING OF UTILITIES:

UTILITY LOCATIONS SHOWN ON THE DRAWINGS ARE FROM UTILITY COMPANY RECORDS AND MAY OR MAY NOT BE ACCURATE OR COMPLETE. THE CONTRACTOR SHALL VERIFY THE LOCATION OF ALL EXISTING UTILITIES BEFORE BEGINNING CONSTRUCTION AND SHALL PROTECT ALL UTILITY FACILITIES FROM DAMAGE AND DISRUPTION. THE CONTRACTOR SHALL REPAIR AND RESTORE ANY UTILITIES DAMAGED OR DISRUPTED DURING CONSTRUCTION OPERATIONS TO THE SATISFACTION OF THE UTILITY OWNER AT CONTRACTOR'S OWN EXPENSE.

PRIOR TO POLE INSTALLATION, CONTRACTOR SHALL PHYSICALLY LOCATE ALL UTILITIES IN THE AFFECTED AREA, REGARDLESS OF THE OWNERSHIP OF THE UTILITY. JULIE LOCATING ALONE IS NOT SUFFICIENT. METHODS THE CONTRACTOR SHALL USE INCLUDE HAND DIGGING, VACUUM POTHOLING, PROBING, ELECTRONIC LOCATING USING CONTRACTOR'S OWN EQUIPMENT, VISUAL SURVEY OF NEARBY FACILITIES (MANHOLES, INLETS, STREET BOXES, HYDRANTS AND THE LIKE), CITY SEWER MAPS, IN SHORT: ANY METHOD DEEMED BY THE CONTRACTOR TO BE SUFFICIENT TO PREVENT ANY DAMAGE OR DISRUPTION TO EXISTING UTILITIES. FIELD LOCATING OF UTILITIES SHALL BE INCLUDED WITH THE ASSOCIATED PAY ITEM.
- DETERMINING LIGHT POLE LOCATIONS:

INSTALL LIGHT POLES TO THE OFFSET SPECIFIED IN THE PLANS. TO ACHIEVE THIS CONSISTENT OFFSET THE CONTRACTOR SHALL LOCATE ALL UTILITIES AT THE PROPOSED LIGHT POLES, ACCORDING TO GENERAL NOTE 3. AFTER UTILITIES HAVE BEEN LOCATED, VERIFY PROPOSED LIGHT POLE OFFSETS TO ACHIEVE A CONSISTENT OFFSET. CONFIRM LIGHT POLE PLACEMENTS WITH THE COUNTY IN THE FIELD PRIOR TO INSTALLATION. DETERMINING LIGHT POLE LOCATIONS SHALL BE INCLUDED WITH THE PAY ITEM LIGHT POLE, WOOD, 50 FOOT, CLASS 4, WITH 15FT MAST ARM.
- REPAIR OF DAMAGE:

PROVIDE REPAIRS TO ANY PUBLIC OR PRIVATE PROPERTY, INCLUDING UTILITIES WHICH ARE DAMAGED OR DISTURBED BY CONSTRUCTION OPERATIONS. REPAIRS SHALL BE PROVIDED AT CONTRACTOR'S OWN EXPENSE. WHERE UTILITY LINES, UNDERGROUND OBSTRUCTIONS OR PIPING MAY BE UNCOVERED BY CONSTRUCTION ACTIVITIES THE CONTRACTOR SHALL NOTIFY THE OWNER OF THE UTILITY AND TAKE ALL NECESSARY MEASURES TO PREVENT INTERRUPTION OF SERVICES THAT MAY BE DAMAGED OR INTERRUPTED THROUGH CONTRACTOR'S OPERATIONS AND PROVIDE IMMEDIATE REPAIR AND/OR RESTORATION AT THE CONTRACTOR'S OWN EXPENSE.
- ALL WIRING IN CONDUIT SHALL BE XLP-USE STRANDED COPPER ACCORDING TO STANDARD SPECIFICATION 1066. CABLE INSULATION SHALL BE SOLID COLOR-CODED RED, BLUE, WHITE OR GREEN ACCORDING TO USE. COLOR TAPE ON BLACK COLOR INSULATION IS NOT ALLOWED.
- CONDUCTORS AT ALL TERMINATIONS SHALL BE MARKED TO INDICATE SOURCE PANEL, CIRCUIT NUMBER AND BRANCH LETTER. WIRING MARKERS SHALL BE CLIP-ON STYLE ACCORDING TO STANDARD SPECIFICATION 1066.07 (b). BUNDLE CONDUCTORS OF THE SAME BRANCH WITH WIRE TIES IN ALL JUNCTION BOXES AND HANDHOLES.
- CONDUCTOR SPLICES SHALL BE COMPRESSION TYPE ACCORDING TO STANDARD SPECIFICATION 1066.06(c)(2) WITH WATERPROOF HEAT SHRINK COVER. SPLICES SHALL BE MADE WATERPROOF WITH HEAT SHRINK CAPPED SPLICE ACCORDING TO STANDARD SPECIFICATION 1066.06 (b).
- INSTALL LIGHT POLES PLUMB AND TRUE. HANDLE LIGHTING FIXTURES CAREFULLY TO PREVENT BREAKAGE, AND DAMAGE. DO NOT INSTALL DAMAGED LIGHTING FIXTURES. REPLACE AND RETURN DAMAGED UNITS TO EQUIPMENT MANUFACTURER.
- AERIAL CABLE SHALL BE XLP ALUMINUM STRANDED CABLE ACCORDING TO THE STANDARD SPECIFICATIONS 1066.04. ALL AERIAL CABLE SHALL BE NEW AND UNUSED. PROVIDE TAGS ON CABLES TO DESIGNATED PHASE CONDUCTORS AND NEUTRAL CONDUCTOR.
- OVERHEAD ELECTRIC SERVICE DISCONNECT SWITCH SHALL COMPLY WITH STANDARD SPECIFICATION 1086.01(a)(3) AND CARRY UL SERVICE ENTRANCE LABEL. ELECTRIC SERVICE POLE SHALL BE CLASS 5 PER ARTICLE 804.02 NOTE 1.
- ALL POLES, WHILE REFERRED TO AS TEMPORARY, ARE PERMANENT. CONTRACTOR SHALL TREAT THIS INSTALLATION AS A PERMANENT INSTALLATION.
- NO WORK SHALL COMMENCE UNTIL TRAFFIC CONTROL REQUIREMENTS ARE MET.
- MAIL BOXES SHALL BE RELOCATED BY THE CONTRACTOR AS DIRECTED BY THE LOCAL POSTAL AUTHORITY. UNLESS INCLUDED AS A CONTRACT PAY ITEM, THIS WORK SHALL BE CONSIDERED INCIDENTAL TO THE CONTRACT.
- ALL UTILITIES, SCHOOL DISTRICTS, LOCAL POLICE, AND FIRE DEPARTMENTS SHALL BE NOTIFIED BY THE CONTRACTOR PRIOR TO THE START OF CONSTRUCTION.
- UNLESS AUTHORIZED BY THE ENGINEER, ALL EXISTING ACCESS POINTS SHALL BE MAINTAINED AT ALL TIMES BY THE CONTRACTOR. THE LOCATION AND ELEVATION OF EXISTING UTILITIES ARE APPROXIMATE AND ARE PROVIDED BY THE OWNERS. THE EXACT LOCATIONS AND ELEVATIONS ARE TO BE VERIFIED BY THE CONTRACTOR THROUGH THE OWNERS OF THE UTILITIES.
- TRAFFIC CONTROL AND PROTECTION SHALL BE PERFORMED IN ACCORDANCE WITH THE TRAFFIC CONTROL PLAN, TRAFFIC SIGNAL PLANS, THESE NOTES, APPLICABLE SPECIAL PROVISIONS, AND SECTION 701 OF THE STANDARD SPECIFICATIONS AS AMENDED BY THE SPECIAL PROVISION FOR WORK ZONE TRAFFIC CONTROL (CHECK SHEET LRS 3).
- ARROW BOARDS WILL BE REQUIRED WHEN IMPLEMENTING ALL LANE CLOSURES.
- ALL PAY ITEMS SHALL BE IN ACCORDANCE WITH THE STANDARD SPECIFICATIONS OR INCLUDED SPECIALS.

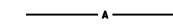
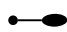

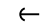
LIGHTING SUMMARY OF QUANTITIES

SPECIAL PROVISION	PAY ITEM NO.	DESCRIPTION (IDOT PAY ITEM #)	UNIT	TOTAL QUANTITY
	1	ELECTRIC SERVICE INSTALLATION (80400100)	EACH	1
X	2	ELECTRIC UTILITY SERVICE CONNECTION (80400200)	EACH	1
	3	AERIAL CABLE, 2-1/C NO. 2 WITH MESSENGER WIRE (81800190)	FOOT	2,267
	4	LIGHTING CONTROLLER, POLE MOUNTED, 240 VOLT, 60 AMP (82500310)	EACH	1
	5	LIGHT POLE, WOOD, 50 FOOT, CLASS 4, WITH 15FT MAST ARM (83057295)	EACH	14
X	6	TRAFFIC CONTROL AND PROTECTION (SPECIAL)	L SUM	1
X	7	SPECIAL WASTE DISPOSAL (SPECIAL)	CU YD	120
X	8	LUMINAIRE, LED, ROADWAY (SPECIAL)	EACH	14
X	9	CLEARING AND GRUBBING (SPECIAL)	SQ YD	1,135
X	10	TREE REMOVAL (SPECIAL)	EACH	5

DISTRICT 1 & HIGHWAY STANDARDS

BE-800	TEMPORARY LIGHT POLE DETAILS
825001-04	LIGHTING CONTROLLER POLE MOUNTED, 240V
830026-01	TEMPORARY ROADWAY LIGHTING
701001-02	OFF-RD OPERATIONS, 2L, 2W, MORE THAN 15' (4.5M) AWAY
701006-05	OFF-RD OPERATIONS, 2L, 2W, 15' (4.5M) TO 24' (600MM) FROM PAVEMENT EDGE
701201-04	LANE CLOSURE, 2L, 2W, DAY ONLY, FOR SPEEDS > 45 MPH
701901-04	TRAFFIC CONTROL DEVICES

PLAN SYMBOLS

	AERIAL CABLE, 2-1/C NO. 2 WITH MESSENGER WIRE
	LIGHT POLE, WOOD, 50 FOOT, CLASS 4 WITH 15FT MAST ARM AND LUMINAIRE, LED, ROADWAY
	ELECTRIC SERVICE INSTALLATION, ELECTRIC UTILITY SERVICE CONNECTION, AND LIGHTING CONTROLLER, POLE MOUNTED, 240V, 60A
	GUYWIRE OR DEADMAN ANCHOR

MODEL Default
FILE Name: I:\projects\hwy\dupage\dupage\Drawings\DCN\CAD_Sheets\0181937_09-01.dwg
Project: 0181937-09 - Dupage County Verbois Traffic W02004
Drawing: DCN\CAD_Sheets\0181937_09-01.dwg
User: dremmer



USER NAME = dremmer	DESIGNED - TJS/DAR	REVISED -
	DRAWN - SRL	REVISED -
PLOT SCALE = 2,0000 ' / In.	CHECKED - JDE	REVISED -
PLOT DATE = 4/18/2022	DATE - 04/11/22	REVISED -

**DUPAGE COUNTY
DIVISION OF TRANSPORTATION**

**HIGHWAY STANDARDS, GENERAL NOTES, SOQ
DUPAGE COUNTY - FABYAN PARKWAY**

SCALE: N.T.S. SHEET 1 OF 1 SHEETS STA. TO STA.

F.A. RTE.	SECTION	COUNTY	TOTAL SHEETS	SHEET NO.
	22-00210-05-TL	DUPAGE	18	2
CONTRACT NO.				
ILLINOIS FED. AID PROJECT				

CONDUIT AND CONDUCTOR SCHEDULE			
LOCATION			3 AERIAL CABLE 2-1/C NO. 2 WITH MESSENGER WIRE (FOOT)
FROM	TO	C-C LENGTH	
PP-01	A01	63.9	63.9
A01	A02	140	140
A02	A03	150	150
A03	A04	135	135
A04	A05	165.8	165.8
A05	A06	175	175
A06	A07	175	175
A07	A08	175	175
A08	A09	185	185
A09	A10	180	180
A10	A11	185	185
A11	A12	180	180
A12	A13	177	177
A13	A14	180	180
TOTAL BID			2,267

SCHEDULE OF ELECTRICAL ITEMS								
LOCATION			1	2	4	5	7	8
STRUCTURE NO.	STATION	OFFSET	ELECTRIC SERVICE INSTALLATION (EACH)	ELECTRIC UTILITY SERVICE CONNECTION (EACH)	LIGHTING CONTROLLER POLE MOUNTED 240V 60 AMP (EACH)	LIGHT POLE WOOD, 50 FOOT CLASS 4, WITH 15 FT MAST ARM (EACH)	SPECIAL WASTE DISPOSAL (CU YD)	LUMINAIRE, LED, ROADWAY (EACH)
PP-01	97+00.00	62' LT	1	1	1		8	
A01	97+60.00	40' LT				1	8	1
A02	99+00.00	40' LT				1	8	1
A03	100+50.00	40' LT				1	8	1
A04	101+85.00	40' LT				1	8	1
A05	103+50.00	56' LT				1	8	1
A06	105+25.00	56' LT				1	8	1
A07	107+00.00	56' LT				1	8	1
A08	108+75.00	56' LT				1	8	1
A09	110+60.00	56' LT				1	8	1
A10	112+40.00	56' LT				1	8	1
A11	114+25.00	56' LT				1	8	1
A12	116+05.00	56' LT				1	8	1
A13	117+82.00	56' LT				1	8	1
A14	119+62.00	56' LT				1	8	1
TOTAL			1	1	1	14	120	14

MODEL: Default
 FILE: \\net1.farnsworthgroup.com\data\Projects\30180181937.09 - Dupage County Verbois Traffic W02004 Drawings\DCN\CAD_Sheets\0181937.09-eh-light_schedule.dgn



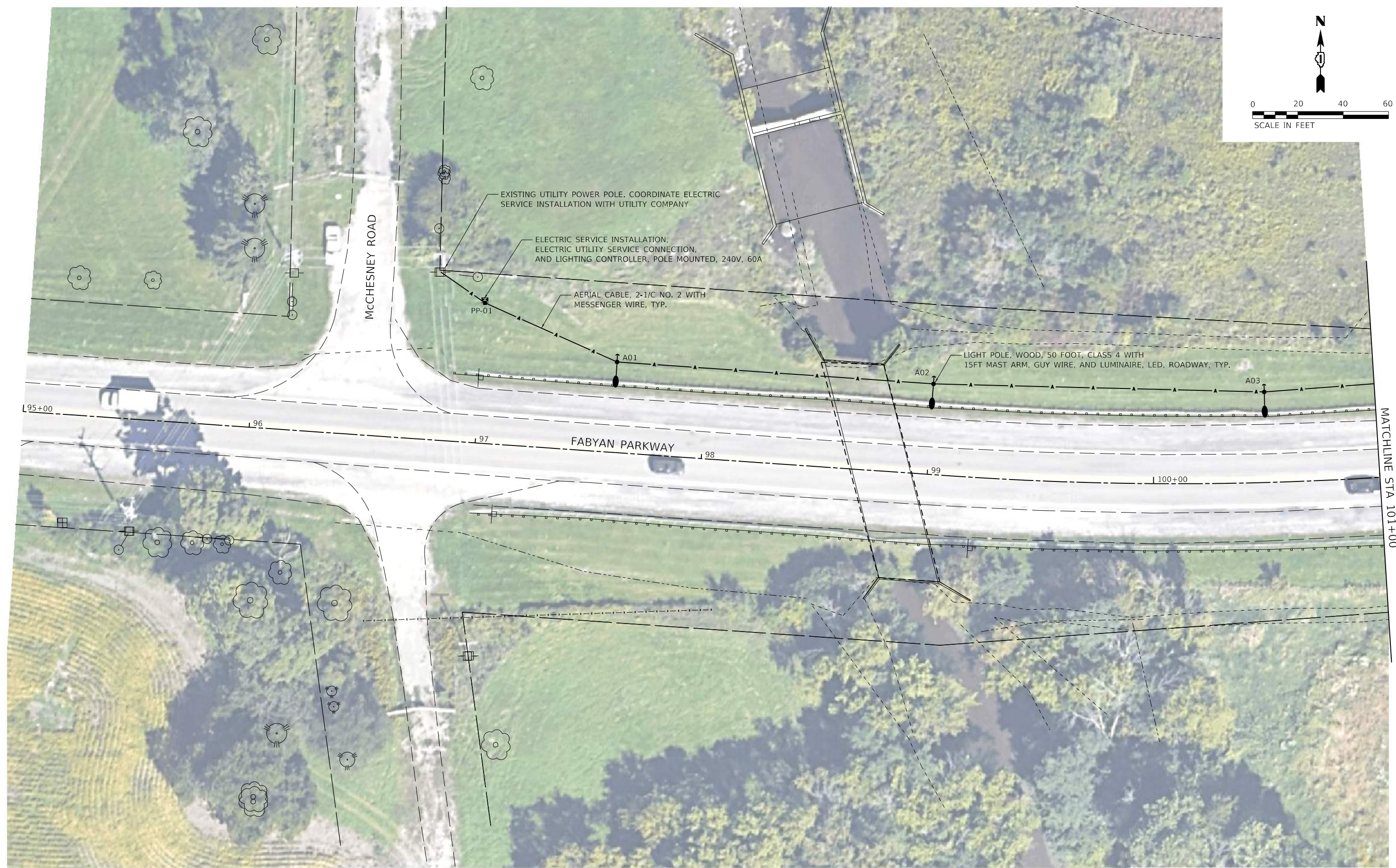
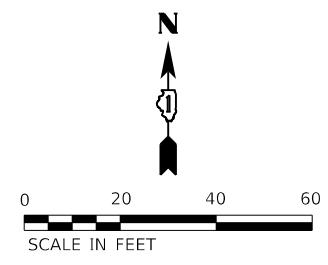
USER NAME = drelmer	DESIGNED - TJS/DAR	REVISED -
PLOT SCALE = 2,0000 ' / In.	CHECKED - JDE	REVISED -
PLOT DATE = 4/18/2022	DATE - 04/11/22	REVISED -

**DUPAGE COUNTY
 DIVISION OF TRANSPORTATION**

**SCHEDULE OF QUANTITIES
 DUPAGE COUNTY - FABYAN PARKWAY**

SCALE: N.T.S. SHEET 1 OF 2 SHEETS STA. TO STA.

F.A. RTE.	SECTION	COUNTY	TOTAL SHEETS	SHEET NO.
	22-00210-05-TL	DUPAGE	18	3
CONTRACT NO.				
ILLINOIS FED. AID PROJECT				



EXISTING UTILITY POWER POLE. COORDINATE ELECTRIC SERVICE INSTALLATION WITH UTILITY COMPANY

ELECTRIC SERVICE INSTALLATION, ELECTRIC UTILITY SERVICE CONNECTION, AND LIGHTING CONTROLLER, POLE MOUNTED, 240V, 60A

AERIAL CABLE, 2-1/C NO. 2 WITH MESSENGER WIRE, TYP.

LIGHT POLE, WOOD, 50 FOOT, CLASS 4 WITH 15FT MAST ARM, GUY WIRE, AND LUMINAIRE, LED, ROADWAY, TYP.

MCCHESEY ROAD

FABYAN PARKWAY

MATCHLINE STA 101+00

MODEL Default - Dupage County Various Traffic - W09004_Drawing\DCEN\CAD_Sheets\01819372_09-sh-light_proposed_1.dwg



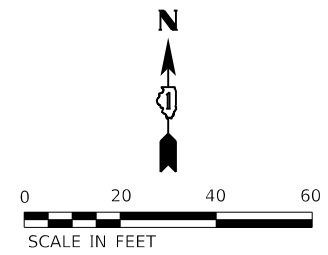
USER NAME = dretmer	DESIGNED - TJS/DAR	REVISED -
PLOT SCALE = 40,0000 ' / In.	DRAWN - SRL	REVISED -
PLOT DATE = 4/18/2022	CHECKED - JDE	REVISED -
	DATE - 04/11/22	REVISED -

**DUPAGE COUNTY
DIVISION OF TRANSPORTATION**

**PROPOSED LIGHTING PLAN
DUPAGE COUNTY - FABYAN PARKWAY**

SCALE: 1"=20' SHEET 1 OF 5 SHEETS STA. 95+00 TO STA. 101+00

F.A. RTE.	SECTION	COUNTY	TOTAL SHEETS	SHEET NO.
	22-00210-05-TL	DUPAGE	18	4
CONTRACT NO.				
ILLINOIS FED. AID PROJECT				



MODEL Default
 FILE NAME: I:\2022\180181937.09 - Dupage County Various Traffic - Dupage County Various Traffic - W09004_Drawing\GEN\CAD Sheets\0181937.09-sh-light_proposed_2.dgn

Farnsworth GROUP
 1011 WARRENVILLE ROAD, SUITE 375
 LISLE, ILLINOIS 60532
 (630) 296-5877 / info@f-w.com

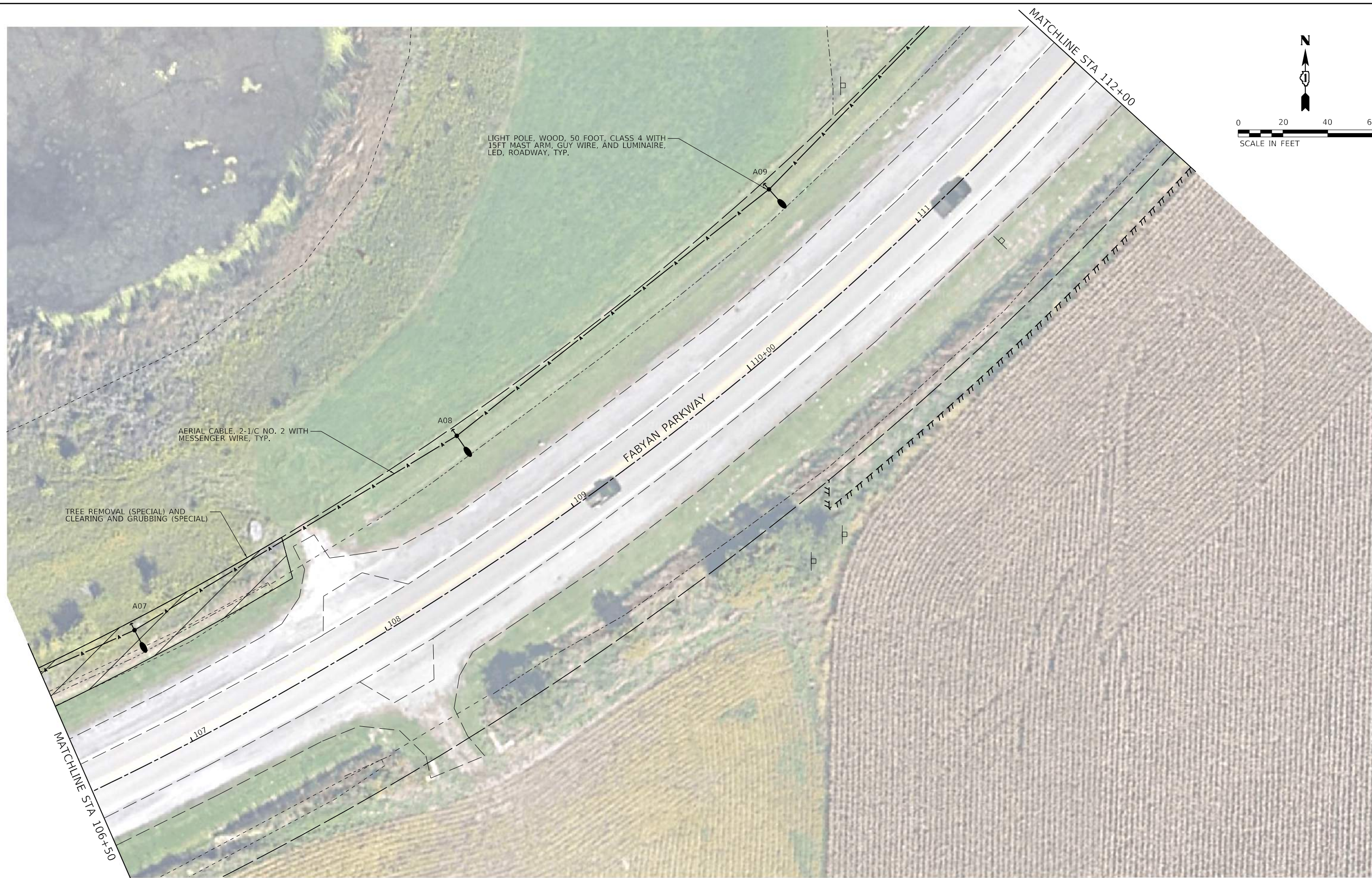
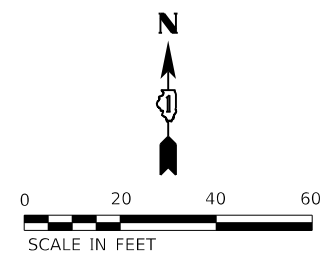
USER NAME = dretmer	DESIGNED - TJS/DAR	REVISED -
PLOT SCALE = 40,0000 ' / In.	DRAWN - SRL	REVISED -
PLOT DATE = 4/18/2022	CHECKED - JDE	REVISED -
	DATE - 04/11/22	REVISED -

**DUPAGE COUNTY
 DIVISION OF TRANSPORTATION**

**PROPOSED LIGHTING PLAN
 DUPAGE COUNTY - FABYAN PARKWAY**

SCALE: 1"=20' SHEET 2 OF 5 SHEETS STA. 101+00 TO STA. 106+50

F.A. RTE.	SECTION	COUNTY	TOTAL SHEETS	SHEET NO.
	22-00210-05-TL	DUPAGE	18	5
CONTRACT NO.				
ILLINOIS FED. AID PROJECT				



LIGHT POLE, WOOD, 50 FOOT, CLASS 4 WITH 15FT MAST ARM, GUY WIRE, AND LUMINAIRE, LED, ROADWAY, TYP.

AERIAL CABLE, 2-1/C NO. 2 WITH MESSENGER WIRE, TYP.

TREE REMOVAL (SPECIAL) AND CLEARING AND GRUBBING (SPECIAL)

FABYAN PARKWAY

MATCHLINE STA 112+00

MATCHLINE STA 106+50

MODEL Default
FILE Name: I:\180181937_09 - Dupage County Various Traffic - Dupage County Various Traffic - W09004_Drawing\GEN\CAD_Sheets\0181937_09-sh-light_proposed_3.dgn



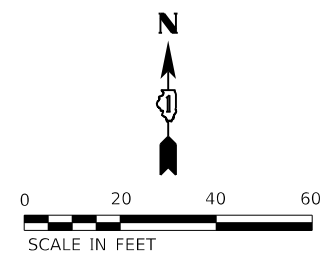
USER NAME = dretmer	DESIGNED - TJS/DAR	REVISED -
	DRAWN - SRL	REVISED -
PLOT SCALE = 40,0000 ' / In.	CHECKED - JDE	REVISED -
PLOT DATE = 4/18/2022	DATE - 04/11/22	REVISED -

**DUPAGE COUNTY
DIVISION OF TRANSPORTATION**

**PROPOSED LIGHTING PLAN
DUPAGE COUNTY - FABYAN PARKWAY**

SCALE: 1"=20' SHEET 3 OF 5 SHEETS STA. 106+50 TO STA. 112+00

F.A. RTE.	SECTION	COUNTY	TOTAL SHEETS	SHEET NO.
	22-00210-05-TL	DUPAGE	18	6
CONTRACT NO.				
ILLINOIS FED. AID PROJECT				



MODEL Default
 FILE Name: I:\2022\180181937.09 - Dupage County Various Traffic - Dupage County Various Traffic - W09004_Drawing\GEN\CAD Sheets\0181937.09-sh-light_proposed_4.dgn



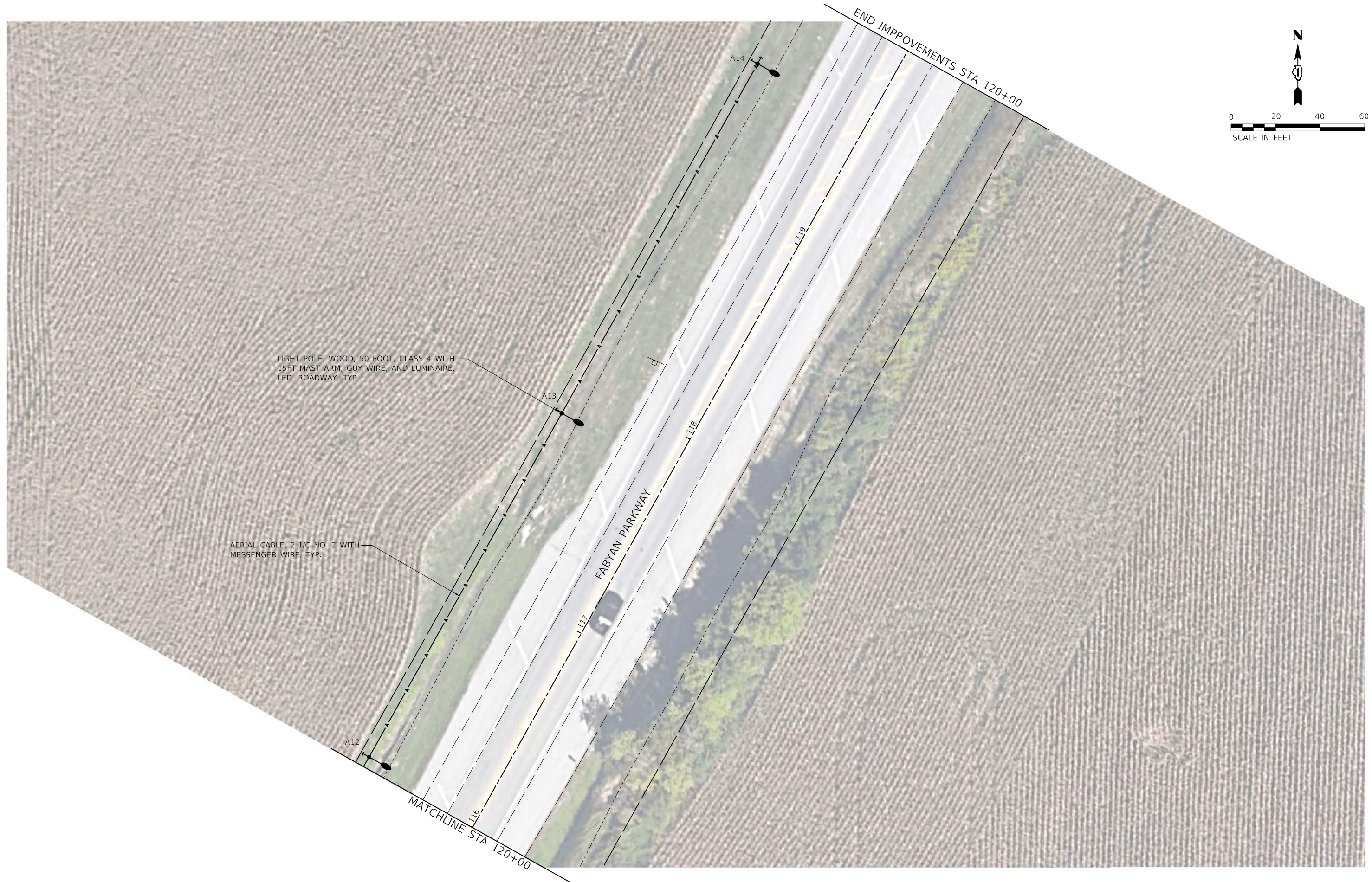
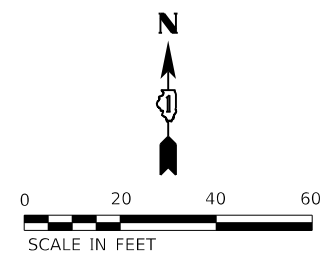
USER NAME = dretmer	DESIGNED - TJS/DAR	REVISED -
	DRAWN - SRL	REVISED -
PLOT SCALE = 40,0000 ' / In.	CHECKED - JDE	REVISED -
PLOT DATE = 4/18/2022	DATE - 04/11/22	REVISED -

**DUPAGE COUNTY
 DIVISION OF TRANSPORTATION**

**PROPOSED LIGHTING PLAN
 DUPAGE COUNTY - FABYAN PARKWAY**

SCALE: 1"=20' SHEET 4 OF 5 SHEETS STA. 112+00 TO STA. 116+00

F.A. RTE.	SECTION	COUNTY	TOTAL SHEETS	SHEET NO.
	22-00210-05-TL	DUPAGE	18	7
CONTRACT NO.				
ILLINOIS FED. AID PROJECT				



MODEL Default
 FILE NAME: \\03180181937.09 - Dupage County Various Traffic - W0904_Drawing\GEN\CAD_Sheets\0181937.09-sh-light_proposed_5.dwg



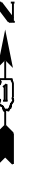
USER NAME = dretmer	DESIGNED - TJS/DAR	REVISED -
PLOT SCALE = 40,0000' / In.	DRAWN - SRL	REVISED -
PLOT DATE = 4/18/2022	CHECKED - JDE	REVISED -
	DATE - 04/11/22	REVISED -

**DUPAGE COUNTY
DIVISION OF TRANSPORTATION**

**PROPOSED LIGHTING PLAN
DUPAGE COUNTY - FABYAN PARKWAY**

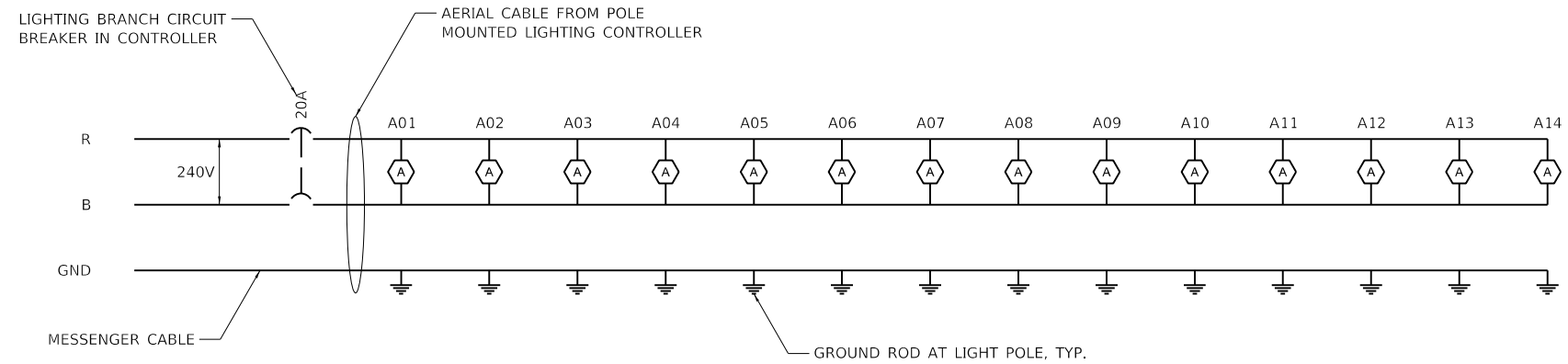
SCALE: 1"=20' SHEET 5 OF 5 SHEETS STA. 116+00 TO STA. 120+00

F.A. RTE.	SECTION	COUNTY	TOTAL SHEETS	SHEET NO.
	22-00210-05-TL	DUPAGE	18	8
CONTRACT NO.				
ILLINOIS FED. AID PROJECT				



NOTES

1. PROVIDE ELECTRIC UTILITY SERVICE 120/240V, SINGLE PHASE, 3-WIRE, 60A.
2. ALL CONDUCTORS SHALL BE AERIAL CABLE, 2-1/2 NO. 2, WITH MESSENGER WIRE (PAY ITEM 81800190)
3. CIRCUIT LOAD: FIXTURE WATTAGE = 177W EACH
TOTAL WATTAGE: 2,478W
CIRCUIT CURRENT: 10.33A AT 240V



LIGHTING CIRCUIT DIAGRAM

MODEL Default
 FILE Name: \\031801181937.09 - Dupage County Various Traffic - W0904_Drawing\GENCAD_Sheets\0181937.09-sh-light_Circuit_Diagram.dgn



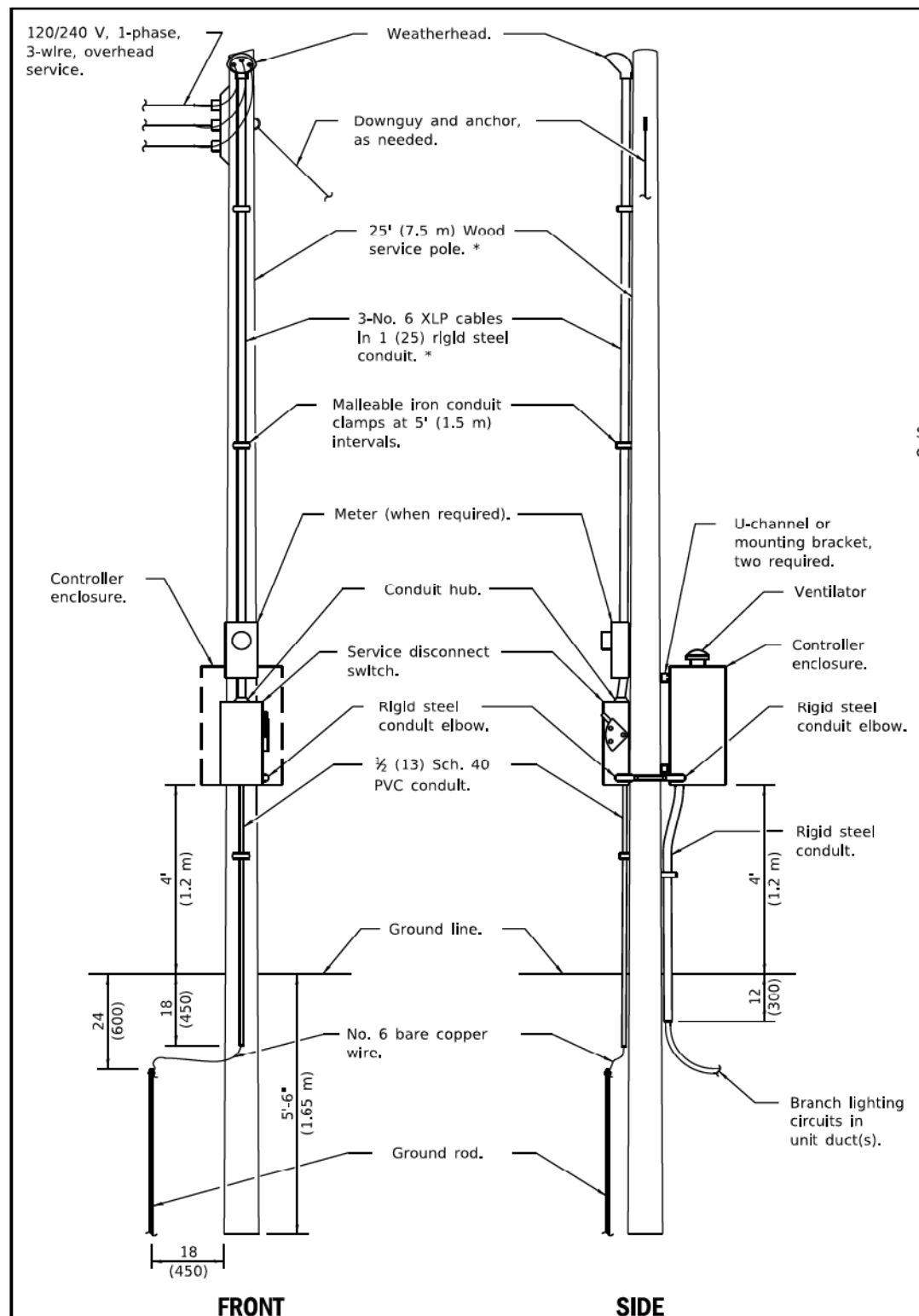
USER NAME = dreimer	DESIGNED - TJS/DAR	REVISED -
PLOT SCALE = 20,0000 ' / In.	DRAWN - SRL	REVISED -
PLOT DATE = 4/18/2022	CHECKED - JDE	REVISED -
	DATE - 04/11/22	REVISED -

**DUPAGE COUNTY
DIVISION OF TRANSPORTATION**

**LIGHTING CIRCUIT DIAGRAM
DUPAGE COUNTY - FABYAN PARKWAY**

SCALE: N.T.S SHEET 1 OF 1 SHEETS STA. TO STA.

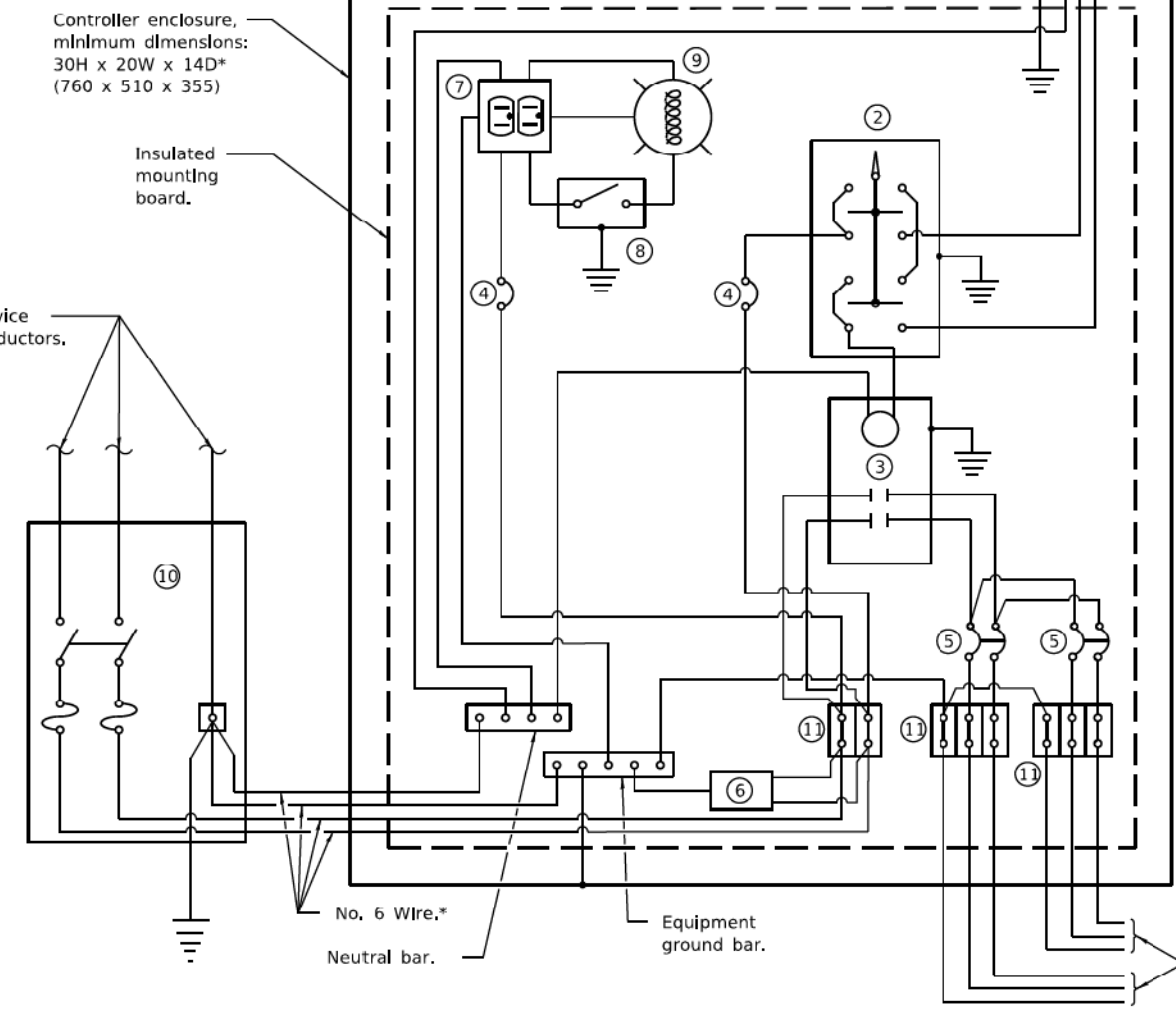
F.A. RTE.	SECTION	COUNTY	TOTAL SHEETS	SHEET NO.
	22-00210-05-TL	DUPAGE	18	9
CONTRACT NO.				
ILLINOIS FED. AID PROJECT				



FRONT SIDE

ELECTRIC SERVICE INSTALLATION

(Typical overhead service shown. Cut pole off for underground service and treat cut surface with preservative. Consult utility company standards for exact requirements.)
 *Size larger as needed.



CONTROL SCHEMATIC

- ① Photocell with integral surge arrester.
 - ② HAND-OFF-AUTO selector switch.
 - ③ 100 amp*, electrically held contactor.
 - ④ 15 amp, 1-pole circuit breaker.
 - ⑤ 20 amp*, 2-pole circuit breaker (two spares required but not shown).
 - ⑥ Surge arrester.
 - ⑦ GFCI duplex receptacle.
 - ⑧ Single-pole, single-throw switch.
 - ⑨ Incandescent luminaire, enclosed and gasketed with 100 watt lamp.
 - ⑩ Service disconnect switch - 2-pole, 3-wire, 60 amp*, fused at 60 amp*, solid neutral in NEMA 4X enclosure having lockable external handle.
 - ⑪ Terminal block sized for conductors as shown on plans.
- * Size larger as needed.

Illinois Department of Transportation

PASSED January 1, 2019
M.E. Sappelt
 ELECTRICAL AND MECHANICAL UNIT CHIEF

APPROVED January 1, 2019
S.E. Eg
 ENGINEER OF DESIGN AND ENVIRONMENT

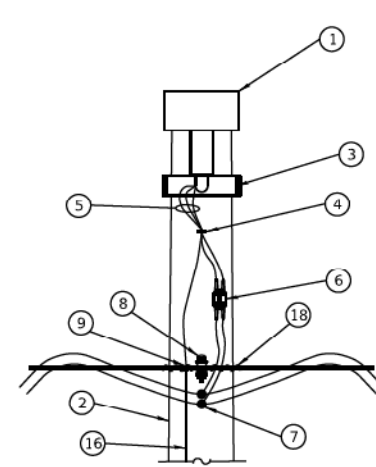
ISSUED 1.1.10

**LIGHTING CONTROLLER
 POLE MOUNTED, 240V**

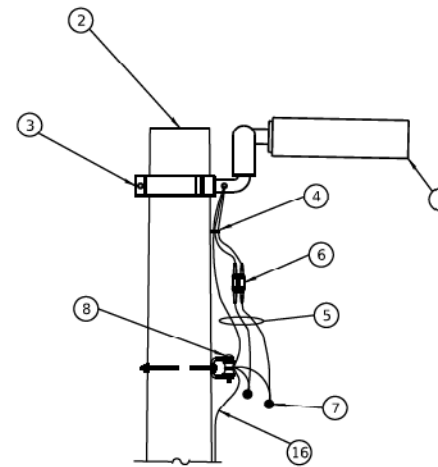
(Sheet 2 of 2)

STANDARD 825001-04

MODEL Default: \\F:\1300180181937.09 - Dupage County Various Traffic W09104_Drawing\GEN\CAD_Sheets\0181937.09-std-light_details.dgn
 FILE NAME: \\F:\1300180181937.09 - Dupage County Various Traffic W09104_Drawing\GEN\CAD_Sheets\0181937.09-std-light_details.dgn



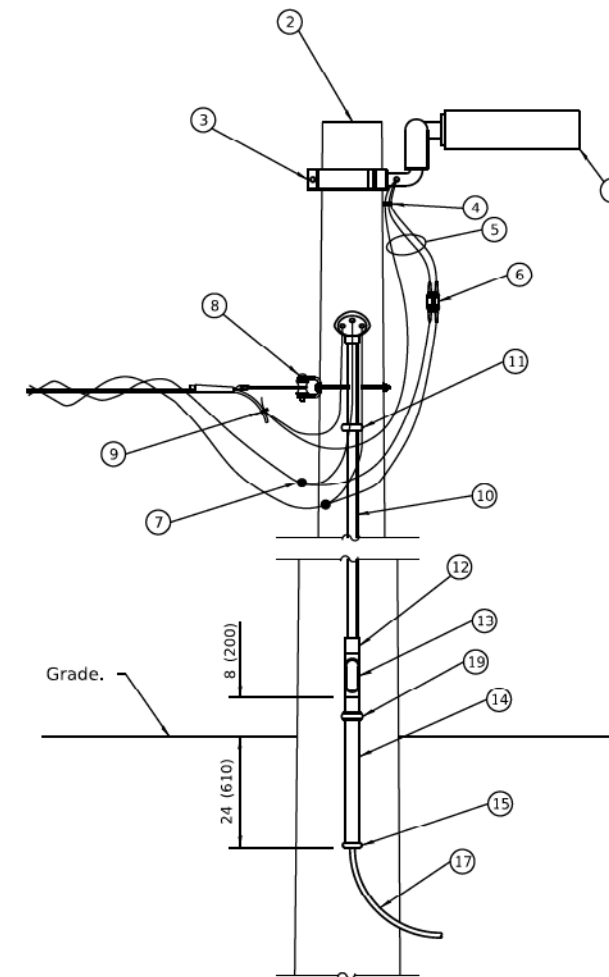
FACING VIEW



SIDE VIEW

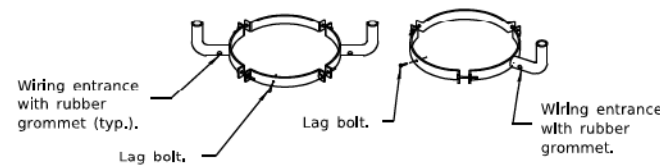
LUMINAIRE MOUNTING DETAILS

43' - 44' (13.1 m - 13.4 m) mounting height unless noted otherwise on plans.



LIGHT POLE WITH CIRCUIT ROUTED UNDERGROUND

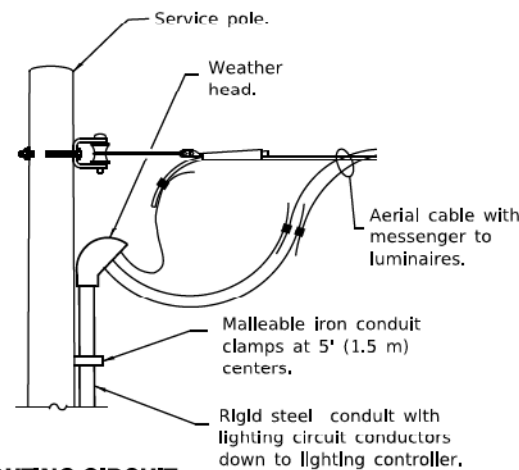
- ① Luminaire.
 - ② Wood light pole, 50' (15.2 m), class 3 (typ.). *
 - ③ Luminaire mounting bracket.
 - ④ Cable clamps on 24" (600) centers.
 - ⑤ Three #10 XLP-USE cable.
 - ⑥ Waterproof, two-pole fuse holder with fuses.
 - ⑦ Waterproof insulation piercing tap connector.
 - ⑧ Heavy duty Insulated pulley clevis with mounting bolt and hardware.
 - ⑨ Ground clamp.
 - ⑩ 1 (25) rigid steel conduit. *
 - ⑪ Malleable iron conduit clamps, 5' (1.5 m) intervals.
 - ⑫ Threaded conduit reducer.
 - ⑬ "C" conduit, threaded.
 - ⑭ 1½ (40) rigid steel conduit. *
 - ⑮ Conduit bushing.
 - ⑯ #6 Bare copper ground wire to 10 ft. ground rod, every third light pole.
 - ⑰ Unit duct.
 - ⑱ Wire tie.
 - ⑲ Malleable iron conduit clamp below "C" conduit.
- * Size larger as needed.



TWIN

SINGLE

MOUNTING BRACKET DETAILS



LIGHTING CIRCUIT AT SERVICE/CONTROLLER

See standard 825001 for service installation.

GENERAL NOTES
 See plans for wire and unit duct sizes and pole locations not shown.
 Provide guy wires with strain Insulators and anchors, as needed.
 All dimensions are in inches (millimeters) unless otherwise shown.

Illinois Department of Transportation

PASSED January 1, 2019
ME Supple
 ELECTRICAL AND MECHANICAL UNIT CHIEF

APPROVED January 1, 2019
S. E. Eg
 ENGINEER OF DESIGN AND ENVIRONMENT

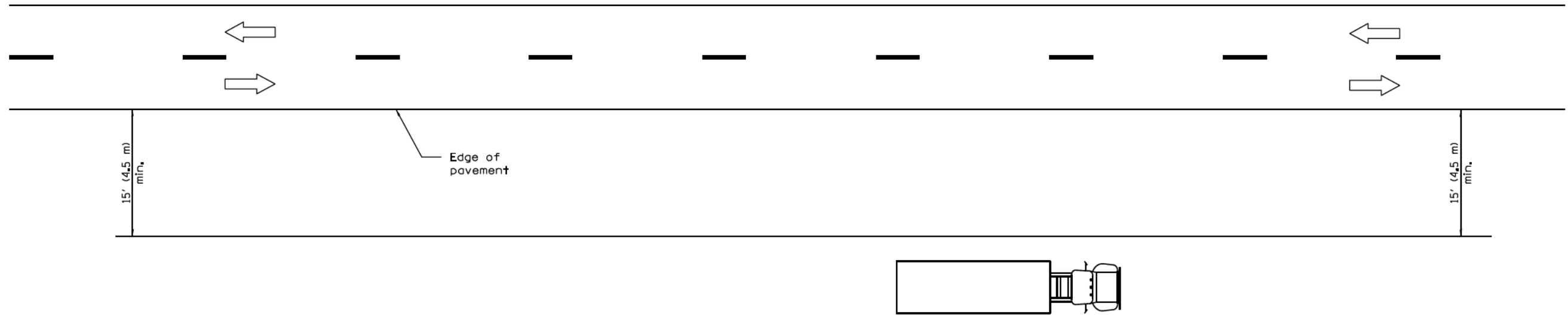
ISSUED 1-1-97

DATE	REVISIONS
1-1-19	Revised Luminaire to be horizontal.
1-1-13	New standard.

TEMPORARY ROADWAY LIGHTING

STANDARD 830026-01

MODEL: Default; FILE NAME: D:\1801181937.09 - Dupage County Various Traffic; W09004_Drawing\GEN\CAD_Standards\181937.09-sh-light_details.dwg



TYPICAL APPLICATIONS

- Landscaping work
- Utility work
- Fencing contracts and maintenance
- Cleaning culverts

GENERAL NOTES

This Standard is used where at all times all vehicles, equipment, workers or their activities are more than 15' (4.5 m) from the edge of pavement.

When the work operation requires that two or more work vehicles cross the 15' (4.5 m) clear zone in any one hour, traffic control shall be according to Standard 701006.

All dimensions are in inches (millimeters) unless otherwise shown.

DATE	REVISIONS
1-1-09	Switched units to English (metric).
1-1-05	Revised title and notes.

**OFF-RD OPERATIONS,
2L, 2W, MORE THAN
15' (4.5 m) AWAY**

STANDARD 701001-02

Illinois Department of Transportation

APPROVED January 1, 2009
ENGINEER OF OPERATIONS

APPROVED January 1, 2009
ENGINEER OF DESIGN AND ENVIRONMENT

ISSUED 1-1-97

MODEL: D:\data\11 - Dupage County Various Traffic - W09004_Drawing\GEN\CAD_Standards\01B1937.09-std\duplt_Standards.dgn

Farnsworth GROUP
1011 WARRENVILLE ROAD, SUITE 375
LISLE, ILLINOIS 60532
(630) 296-5877 / info@f-w.com

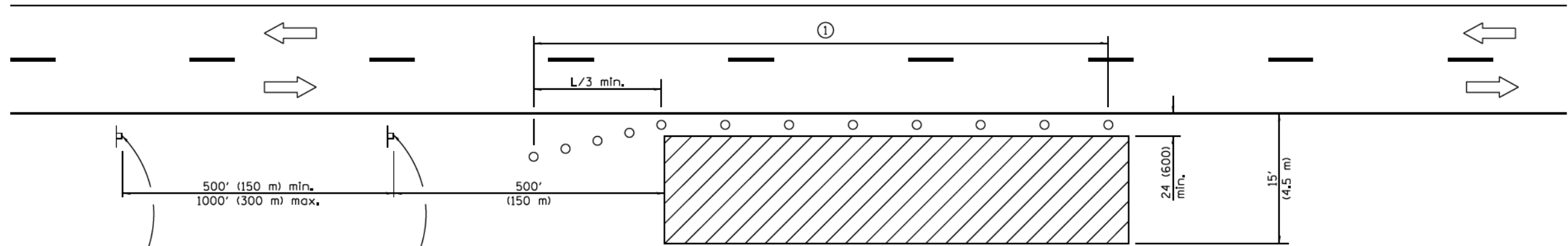
USER NAME = drelmer	DESIGNED - TJS/DAR	REVISED -
PLOT SCALE = 2,000' / 1"	DRAWN - SRL	REVISED -
PLOT DATE = 4/18/2022	CHECKED - JDE	REVISED -
	DATE - 04/11/22	REVISED -

**DUPAGE COUNTY
DIVISION OF TRANSPORTATION**

**DISTRICT 1 AND HIGHWAY STANDARDS
DUPAGE COUNTY - FABYAN PARKWAY**

SCALE: N.T.S. SHEET 5 OF 10 SHEETS STA. TO STA.

F.A. RTE.	SECTION	COUNTY	TOTAL SHEETS	SHEET NO.
	22-00210-05-TL	DUPAGE	18	13
CONTRACT NO.				
ILLINOIS FED. AID PROJECT				



For contract construction projects



W20-I103(O)-48



W21-1(O)-48

For maintenance and utility projects



W20-1(O)-48

TYPICAL APPLICATIONS

- Utility operations
- Culvert extensions
- Side slope changes
- Guardrail installation and maintenance
- Delineator installation
- Landscaping operations
- Shoulder repair
- Sign installation and maintenance

SYMBOLS

- Work area
- Sign
- Cone, drum or barricade

① When the work operation exceeds one hour, cones, drums or barricades shall be placed at 25' (8 m) centers for L/3 distance, and at 50' (15 m) centers through the remainder of the work area.

GENERAL NOTES

This Standard is used where any vehicles, equipment, workers or their activities will encroach in the area 15' (4.5 m) to 24' (600) from the edge of pavement.

Calculate L as follows:

SPEED LIMIT	FORMULAS	
	English	(Metric)
40 mph (70 km/h) or less:	$L = \frac{WS^2}{60}$	$L = \frac{WS^2}{150}$
45 mph (80 km/h) or greater:	$L = W(S)$	$L = 0.65(W)(S)$

W = Width of offset in feet (meters),
S = Normal posted speed mph (km/h).

All dimensions are in inches (millimeters) unless otherwise shown.

Illinois Department of Transportation

APPROVED January 1, 2014

 ENGINEER OF SAFETY ENGINEERING

ISSUED 1-1-97

APPROVED January 1, 2014

 ENGINEER OF DESIGN AND ENVIRONMENT

DATE	REVISIONS
1-1-14	Revised workers sign number to agree with current MUTCD.
1-1-13	Omitted text 'WORKERS' sign.

OFF-RD OPERATIONS, 2L, 2W, 15' (4.5 m) TO 24" (600 mm) FROM PAVEMENT EDGE

STANDARD 701006-05

MODEL Default: \\p011801181937.09 - Dupage County Various Traffic: W20104_Drawing\GEN\CAD_Standards\01181937.09-shd.dwg; Standards.dgn

Farnsworth GROUP
 1011 WARRENVILLE ROAD, SUITE 375
 LISLE, ILLINOIS 60532
 (630) 296-5877 / info@f-w.com

USER NAME = dretmer	DESIGNED - TJS/DAR	REVISED -
	DRAWN - SRL	REVISED -
PLOT SCALE = 2,000' / in.	CHECKED - JDE	REVISED -
PLOT DATE = 4/18/2022	DATE - 04/11/22	REVISED -

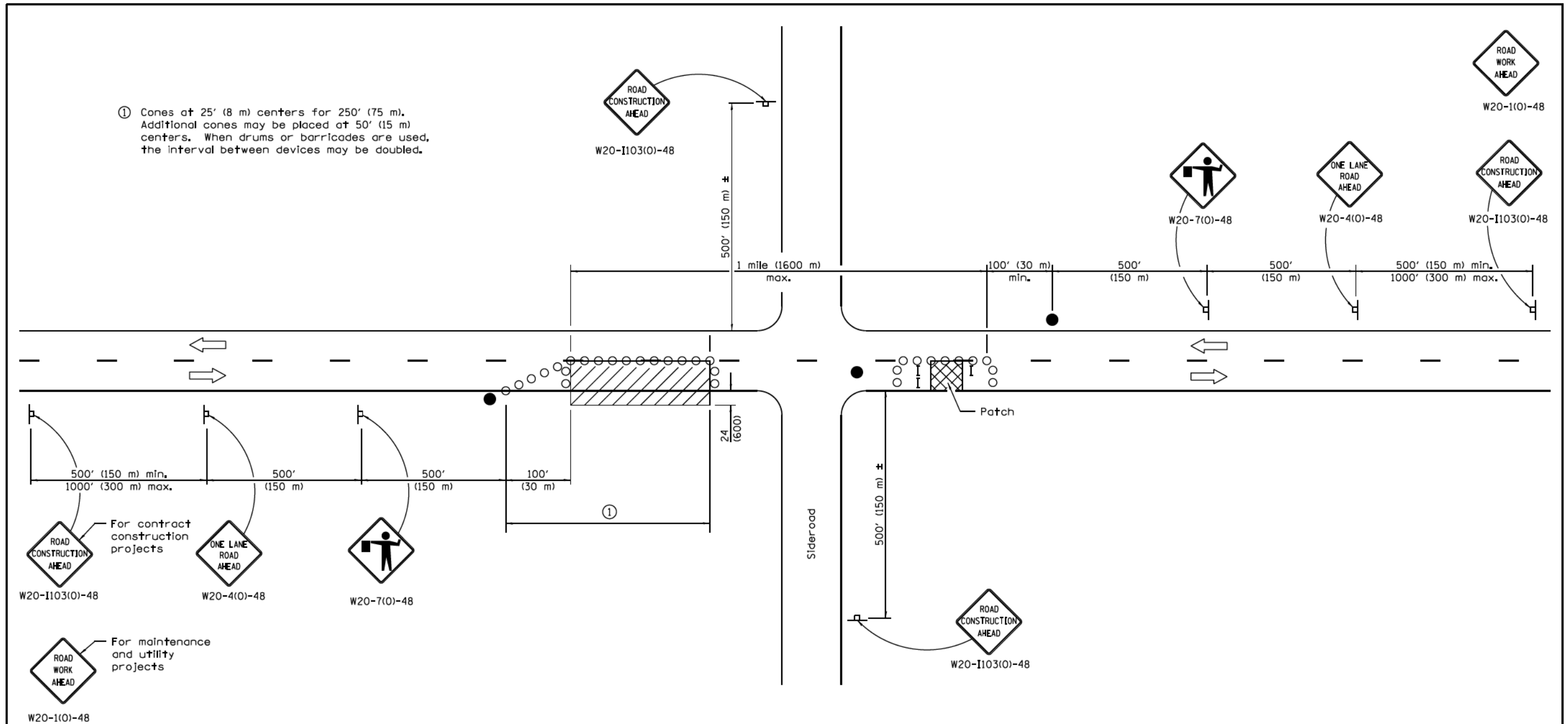
DUPAGE COUNTY DIVISION OF TRANSPORTATION

**DISTRICT 1 AND HIGHWAY STANDARDS
 DUPAGE COUNTY - FABYAN PARKWAY**

SCALE: N.T.S SHEET 6 OF 10 SHEETS STA. TO STA.

F.A. RTE.	SECTION	COUNTY	TOTAL SHEETS	SHEET NO.
	22-00210-05-TL	DUPAGE	18	14
CONTRACT NO.				
ILLINOIS FED. AID PROJECT				

① Cones at 25' (8 m) centers for 250' (75 m). Additional cones may be placed at 50' (15 m) centers. When drums or barricades are used, the interval between devices may be doubled.



For contract construction projects
 ROAD CONSTRUCTION AHEAD (W20-I103(O)-48)
 ONE LANE ROAD AHEAD (W20-4(O)-48)
 ROAD WORK AHEAD (W20-7(O)-48)

For maintenance and utility projects
 ROAD WORK AHEAD (W20-1(O)-48)

SYMBOLS

- Work area
- Sign
- Barricade or drum
- Cone, drum or barricade
- Flagger with traffic control sign

TYPICAL APPLICATIONS

- Isolated patching
- Utility operations
- Storm sewer
- Culverts
- Cable placement

GENERAL NOTES

This Standard is used where at any time, any vehicles, equipment, workers or their activities will encroach in the area between the center line and a line 24 (600) outside the edge of pavement for daylight operation.

When the distance between successive work areas exceeds 2000' (600 m), additional warning signs, flaggers, and taper shall be placed as shown.

All dimensions are in inches (millimeters) unless otherwise shown.

Illinois Department of Transportation

APPROVED January 1, 2011
 ENGINEER OF SAFETY ENGINEERING

APPROVED January 1, 2011
 ENGINEER OF DESIGN AND ENVIRONMENT

ISSUED 1-1-97

DATE	REVISIONS
1-1-11	Revised flagger sign.
1-1-09	Switched units to English (metric).
	Corrected sign No.'s.

**LANE CLOSURE, 2L, 2W,
DAY ONLY,
FOR SPEEDS ≥ 45 MPH**

STANDARD 701201-04

MODEL Default: \\p011801181937.09 - Dupage County Various Traffic - W20104_Drawing\GEN\CAD_Standards\01181937.09-shd.dwg - Standards.dgn

Farnsworth GROUP
 1011 WARRENVILLE ROAD, SUITE 375
 LISLE, ILLINOIS 60532
 (630) 296-5877 / info@f-w.com

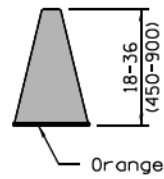
USER NAME = dretmer	DESIGNED - TJS/DAR	REVISED -
PLOT SCALE = 2,0000' / in.	DRAWN - SRL	REVISED -
PLOT DATE = 4/18/2022	CHECKED - JDE	REVISED -
	DATE - 04/11/22	REVISED -

**DUPAGE COUNTY
DIVISION OF TRANSPORTATION**

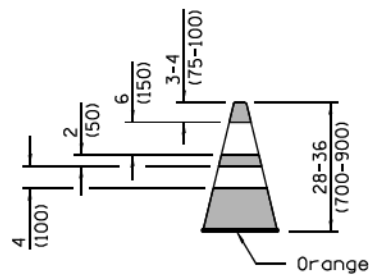
**DISTRICT 1 AND HIGHWAY STANDARDS
DUPAGE COUNTY - FABYAN PARKWAY**

SCALE: N.T.S SHEET 7 OF 10 SHEETS STA. TO STA.

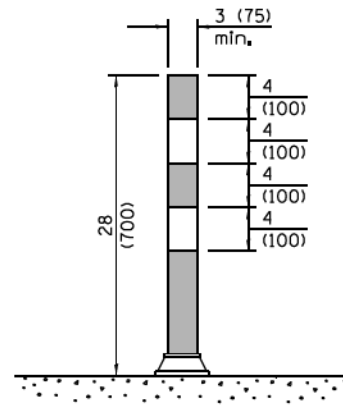
F.A. RTE.	SECTION	COUNTY	TOTAL SHEETS	SHEET NO.
	22-00210-05-TL	DUPAGE	18	15
CONTRACT NO.				
ILLINOIS FED. AID PROJECT				



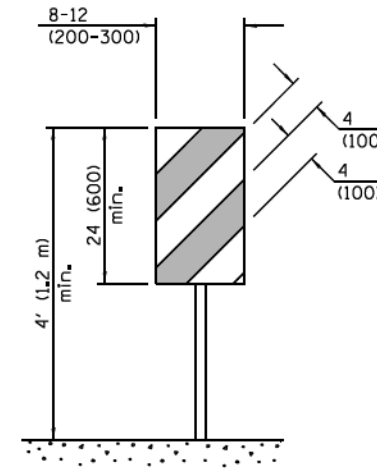
CONE



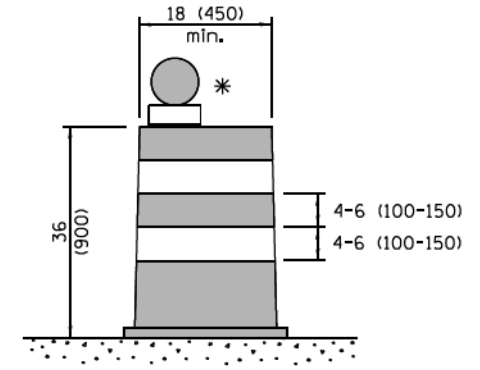
REFLECTORIZED CONE



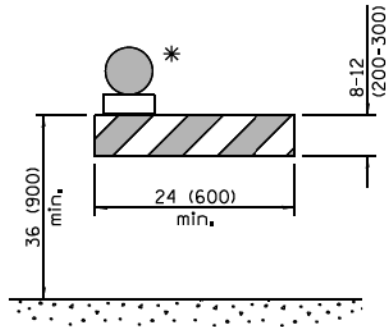
FLEXIBLE DELINEATOR



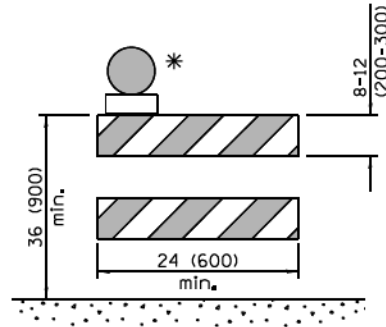
**VERTICAL PANEL
POST MOUNTED**



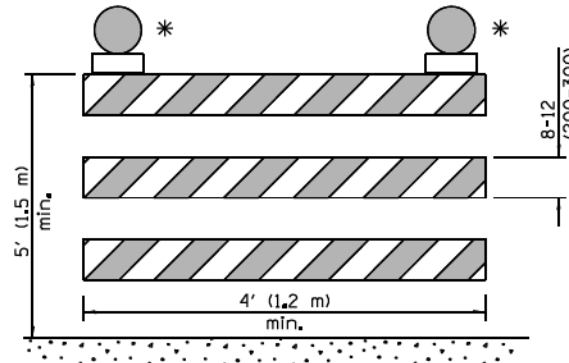
DRUM



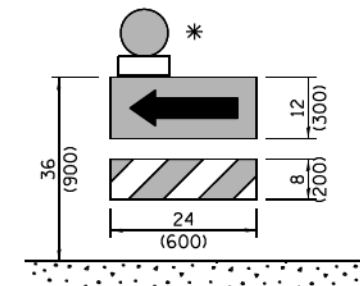
TYPE I BARRICADE



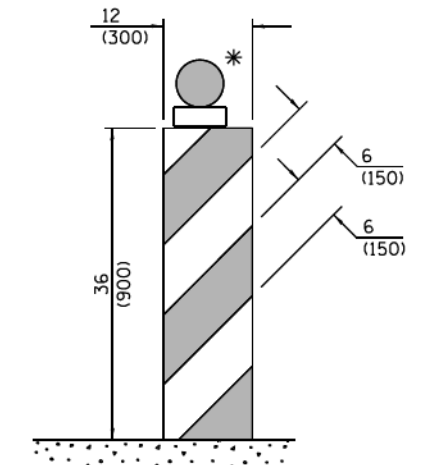
TYPE II BARRICADE



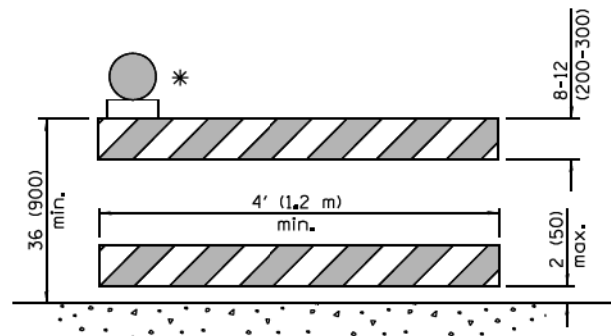
TYPE III BARRICADE



**DIRECTION INDICATOR
BARRICADE**



VERTICAL BARRICADE



**DETECTABLE PEDESTRIAN
CHANNELIZING BARRICADE**

* Warning lights (if required)

Illinois Department of Transportation

APPROVED January 1, 2015
Jerry Allen
 ENGINEER OF OPERATIONS

APPROVED January 1, 2015
[Signature]
 ENGINEER OF DESIGN AND ENVIRONMENT

ISSUED 76-1-1

GENERAL NOTES

All heights shown shall be measured above the pavement surface.

All dimensions are in inches (millimeters) unless otherwise shown.

DATE	REVISIONS
1-1-15	Revised two sign numbers on sheet 2. Added note reg. PHOTO ENFORCED plaque.
1-1-14	Modified flagger sign height. Added highway construction speed zone signs.

TRAFFIC CONTROL DEVICES

(Sheet 1 of 3)

STANDARD 701901-04

MODEL: Default
 FILE NAME: I:\2018\1801181937.09 - Dupage County Various Traffic W09004_Drawing\GEN\CAD_Standards\0181937.09-shd.dwg - Standards.dgn

Farnsworth GROUP
 1011 WARRENVILLE ROAD, SUITE 375
 LISLE, ILLINOIS 60532
 (630) 296-5877 / info@f-w.com

USER NAME = dreimer
 PLOT SCALE = 2,0000' / in.
 PLOT DATE = 4/18/2022

DESIGNED - TJS/DAR
 DRAWN - SRL
 CHECKED - JDE
 DATE - 04/11/22

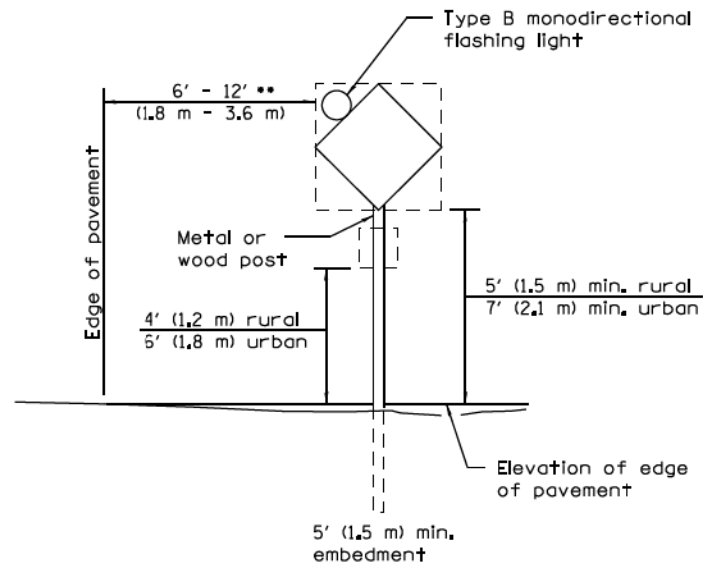
REVISED -
 REVISED -
 REVISED -
 REVISED -

**DUPAGE COUNTY
 DIVISION OF TRANSPORTATION**

**DISTRICT 1 AND HIGHWAY STANDARDS
 DUPAGE COUNTY - FABYAN PARKWAY**

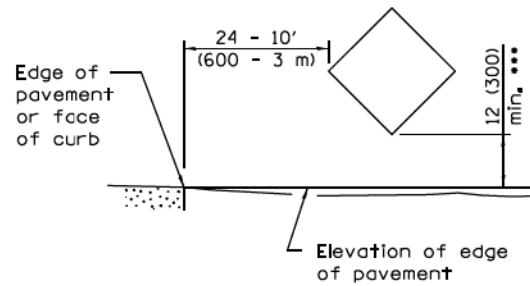
SCALE: N.T.S SHEET 8 OF 10 SHEETS STA. TO STA.

F.A. RTE.	SECTION	COUNTY	TOTAL SHEETS	SHEET NO.
	22-00210-05-TL	DUPAGE	18	16
CONTRACT NO.				
ILLINOIS FED. AID PROJECT				



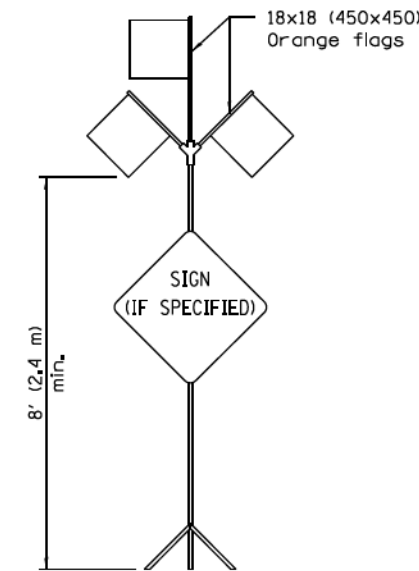
POST MOUNTED SIGNS

** When curb or paved shoulder are present this dimension shall be 24 (600) to the face of curb or 6' (1.8 m) to the outside edge of the paved shoulder.



SIGNS ON TEMPORARY SUPPORTS

*** When work operations exceed four days, this dimension shall be 5' (1.5 m) min. If located behind other devices, the height shall be sufficient to be seen completely above the devices.



HIGH LEVEL WARNING DEVICE

ROAD CONSTRUCTION NEXT X MILES

END CONSTRUCTION

G20-I104(0)-6036

G20-I105(0)-6024

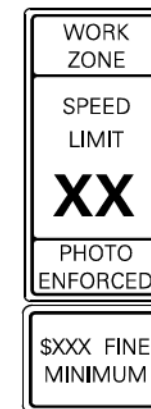
This signing is required for all projects 2 miles (3200 m) or more in length.

ROAD CONSTRUCTION NEXT X MILES sign shall be placed 500' (150 m) in advance of project limits.

END CONSTRUCTION sign shall be erected at the end of the job unless another job is within 2 miles (3200 m).

Dual sign displays shall be utilized on multi-lane highways.

WORK LIMIT SIGNING



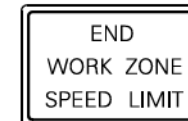
W21-I15(0)-3618

R2-1-3648

R10-I108p-3618 ****

R2-I106p-3618

Sign assembly as shown on Standards or as allowed by District Operations.

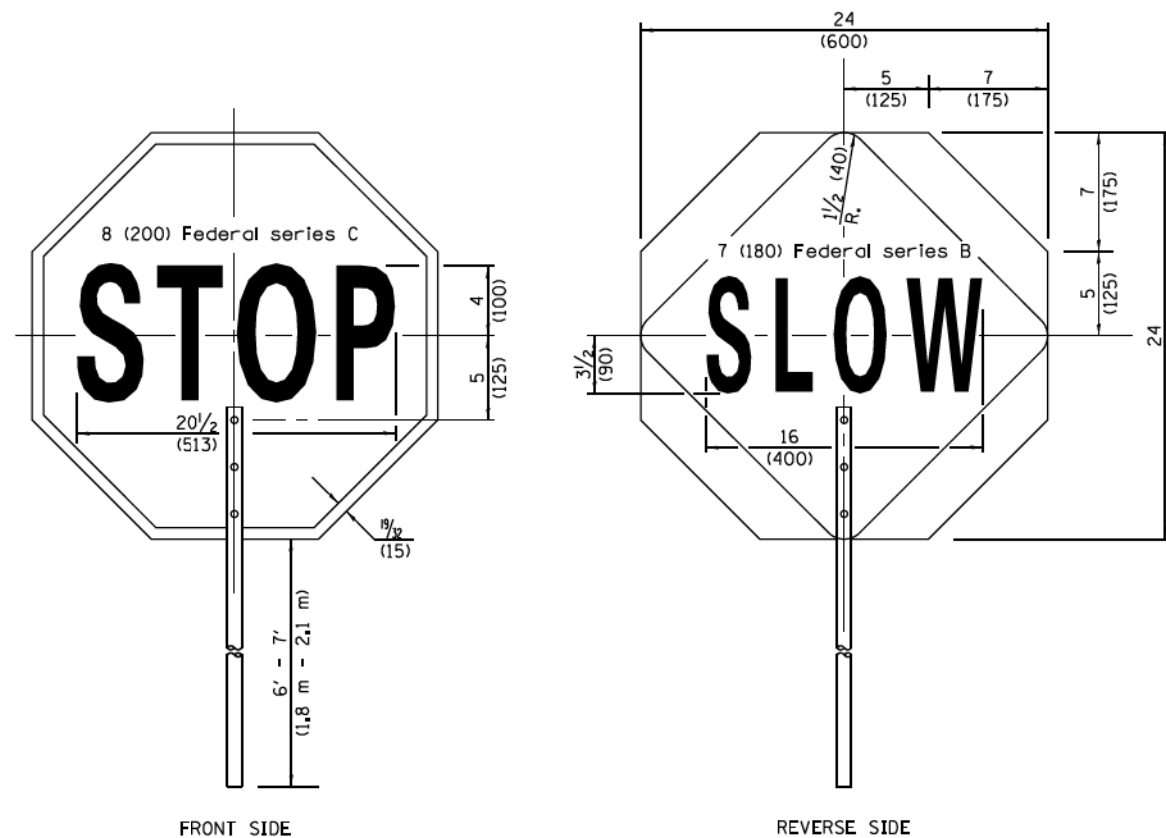


G20-I103(0)-6036

This sign shall be used when the above sign assembly is used.

HIGHWAY CONSTRUCTION SPEED ZONE SIGNS

**** R10-I108p shall only be used along roadways under the jurisdiction of the State.



FLAGGER TRAFFIC CONTROL SIGN

Illinois Department of Transportation

APPROVED January 1, 2015
Jerry Allen
 ENGINEER OF OPERATIONS

APPROVED January 1, 2015
[Signature]
 ENGINEER OF DESIGN AND ENVIRONMENT

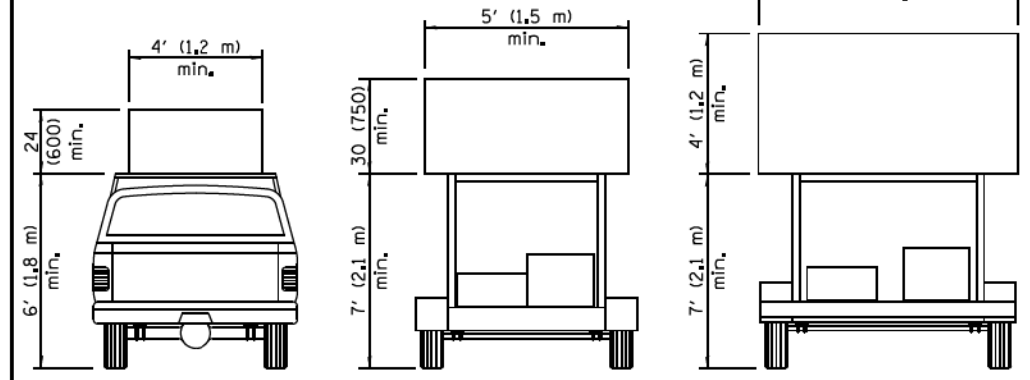
ISSUED 1-1-97

TRAFFIC CONTROL DEVICES

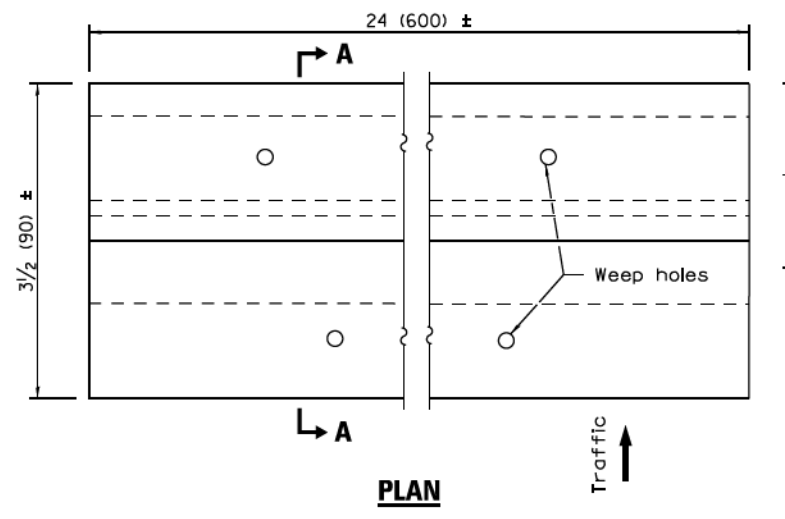
(Sheet 2 of 3)

STANDARD 701901-04

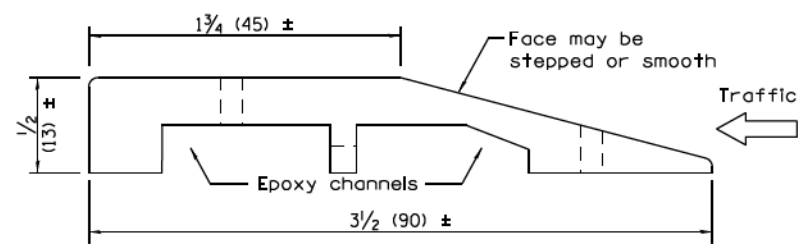
MODEL Default: \\03180181937.09 - Dupage County Various Traffic - W09004_Drawing\GEN\CAD_Standards\0181937.09-std\digit_Standards.dgn



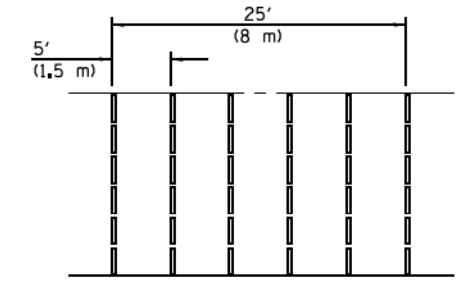
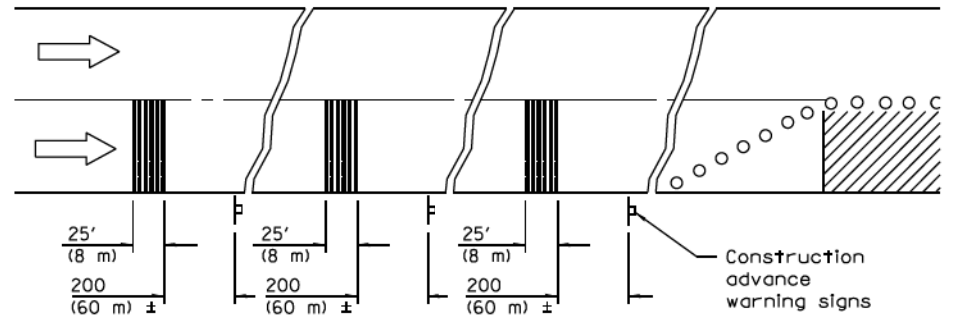
ARROW BOARDS



PLAN

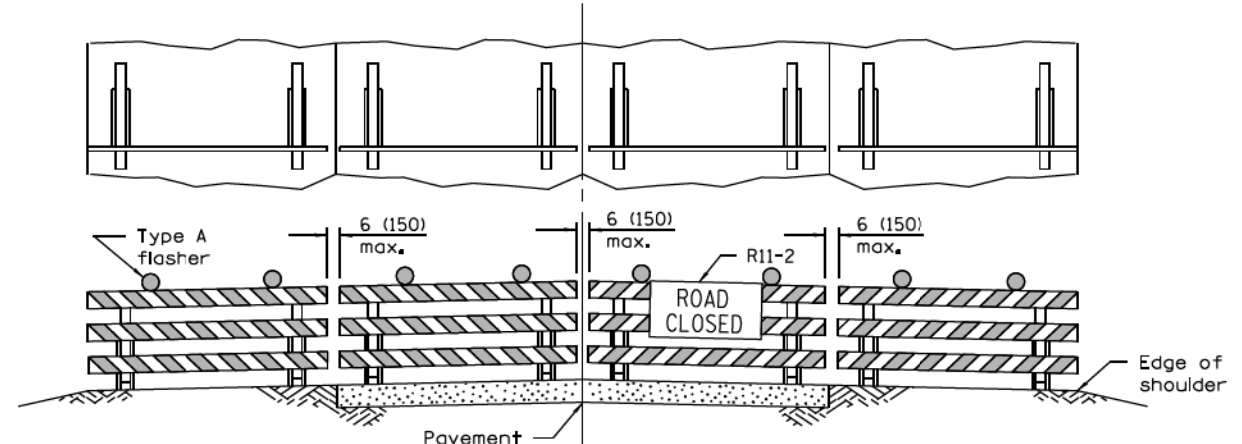


SECTION A-A



TYPICAL INSTALLATION

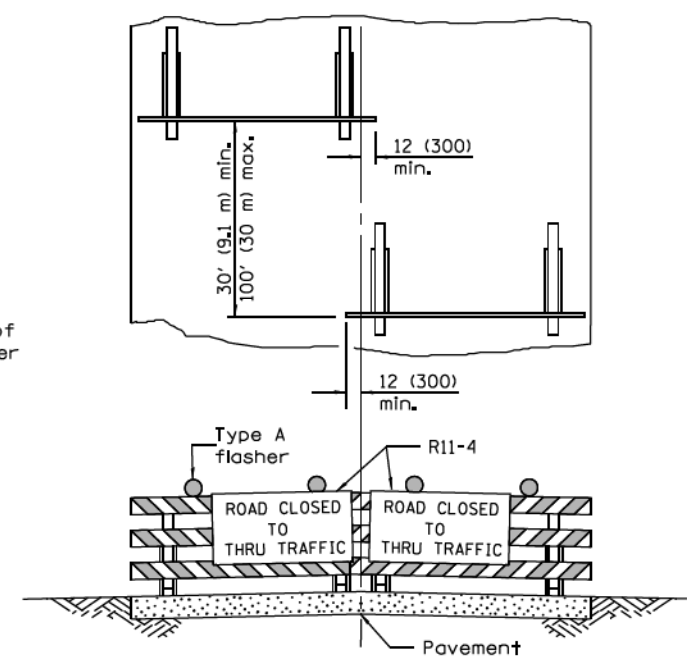
TEMPORARY RUMBLE STRIPS



ROAD CLOSED TO ALL TRAFFIC

Reflectorized striping may be omitted on the back side of the barricades. If a Type III barricade with an attached sign panel which meets NCHRP 350 is not available, the sign may be mounted on an NCHRP 350 temporary sign support directly in front of the barricade.

TYPICAL APPLICATIONS OF TYPE III BARRICADES CLOSING A ROAD



ROAD CLOSED TO THRU TRAFFIC

Reflectorized striping shall appear on both sides of the barricades. If a Type III barricade with an attached sign panel which meets NCHRP 350 is not available, the signs may be mounted on NCHRP 350 temporary sign supports directly in front of the barricade.

Illinois Department of Transportation

APPROVED January 1, 2015
ENGINEER OF OPERATIONS
APPROVED January 1, 2015
ENGINEER OF DESIGN AND ENVIRONMENT

ISSUED 26-1-1

TRAFFIC CONTROL DEVICES

(Sheet 3 of 3)

STANDARD 701901-04

MODEL: D:\m\11801181937.09 - Dupage County Various Traffic - W0904.Dwg\DWG\CAD_Standards\0181937.09-std\digit_Standards.dwg
FILE NAME: 11801181937.09 - Dupage County Various Traffic - W0904.Dwg\DWG\CAD_Standards\0181937.09-std\digit_Standards.dwg

Farnsworth GROUP
1011 WARRENVILLE ROAD, SUITE 375
LISLE, ILLINOIS 60532
(630) 296-5877 / info@f-w.com

USER NAME = dreimer	DESIGNED - TJS/DAR	REVISED -
PLOT SCALE = 2,000' / in.	DRAWN - SRL	REVISED -
PLOT DATE = 4/18/2022	CHECKED - JDE	REVISED -
	DATE - 04/11/22	REVISED -

DUPAGE COUNTY DIVISION OF TRANSPORTATION

**DISTRICT 1 AND HIGHWAY STANDARDS
DUPAGE COUNTY - FABYAN PARKWAY**

SCALE: N.T.S SHEET 10 OF 10 SHEETS STA. TO STA.

F.A. RTE.	SECTION	COUNTY	TOTAL SHEETS	SHEET NO.
	22-00210-05-TL	DUPAGE	18	18
CONTRACT NO.				
ILLINOIS FED. AID PROJECT				